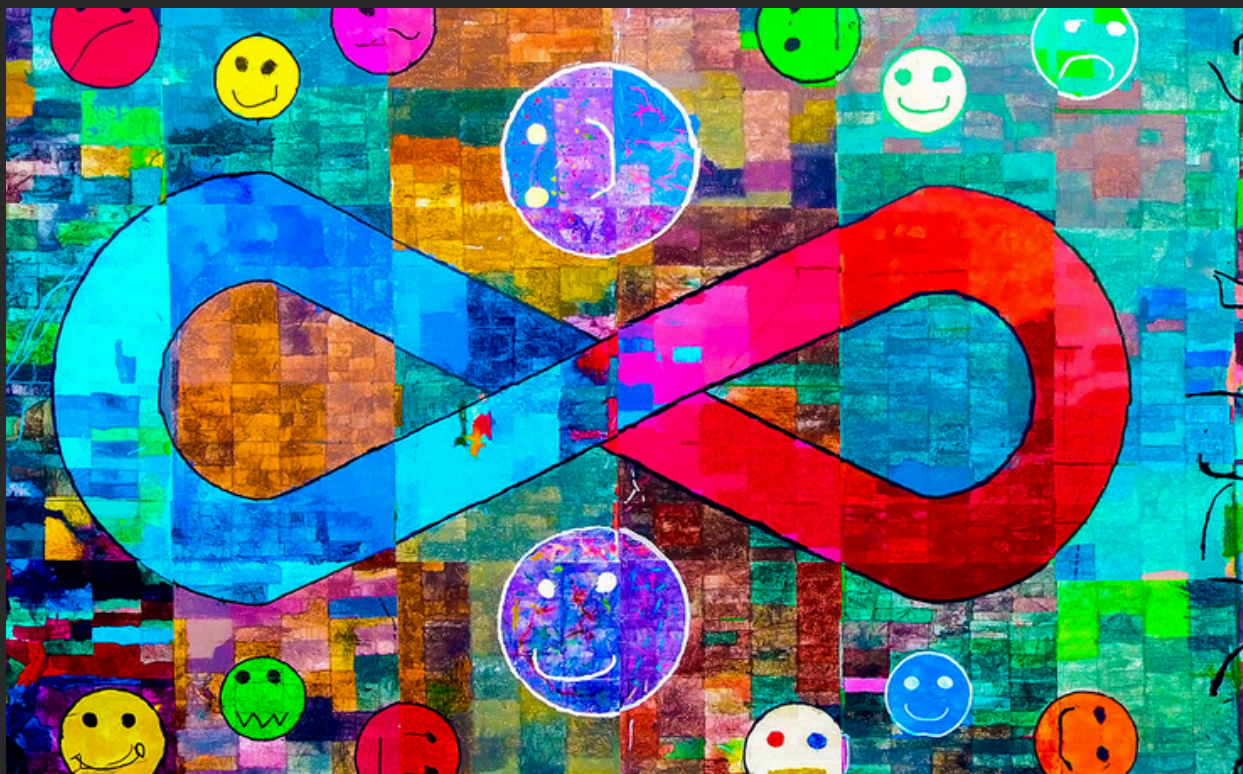


selected
works



Impossibility is a myth

curated by
Princess Ifèdolapo Onikoyi

Kanyeyachukwu
Tagbo-Okeke

Paintings

2025



ABOUT EXHIBITION

Impossibility is a Myth is more than an art show it is a celebration of human courage, creativity, and inclusion. Presented by the Kanyeyachukwu Tagbo-Okeke Foundation in collaboration with Eko Atlantic City, the exhibition will run from October 2nd to 8th, 2025, coinciding with the E1 International Electric Boat Race in Lagos.

The exhibition showcases the works of Kanyeyachukwu (Kanye) Tagbo-Okeke, a world-renowned Nigerian artist and Guinness World Record holder for the largest painting on canvas, Impossibility is a Myth. A young neurodiverse artist, Kanye uses his art to challenge limitations, advocate for inclusive education, and support children with special needs.

At the Eko Atlantic Marina, his award piece will be unveiled alongside the futuristic backdrop of the E1 Electric Boats, symbolizing the harmony of art, innovation, and sustainability. Complementing this will be a solo sale exhibition at the Wings, Oando Towers, offering collectors and enthusiasts the chance to experience and acquire his work while enjoying views of the Lagos Lagoon.

Beyond its artistic brilliance, the exhibition carries a philanthropic mission. Proceeds from sales will fund initiatives that provide therapy, education, and opportunities for neurodiverse and underserved children in Nigeria.

"Impossibility is a Myth" is not just an exhibition it is a movement. It invites the world to witness the power of creativity, the resilience of the human spirit, and the importance of building an inclusive future.

ABOUT ARTIST

Kanyeyachukwu Tagbo-Okeke

Artist | Guinness World Record Holder | Autism Advocate

Kanyeyachukwu Tagbo-Okeke is a young Nigerian artist whose story embodies resilience, creativity, and the belief that "Impossibility is a Myth." Despite being on the autism spectrum, Kanye has transformed what many consider a limitation into a powerful source of inspiration and artistic brilliance.

In 2025, Kanyeyachukwu made history by painting the largest canvas in the world, an extraordinary feat that earned him a Guinness World Record. This groundbreaking work is not only a celebration of art but also a message to the world—that every individual has unique gifts capable of transforming communities and inspiring hope.

Kanye's art is characterized by bold strokes, vibrant colors, and deep symbolism. Each painting carries a message of unity, strength, and possibility. His creative journey has also become a beacon for autism awareness, showcasing the importance of acceptance, inclusion, and support for individuals living with neurodiversity.

Today, as you witness the record-breaking masterpiece at the Eko Atlantic Marina, you are not only experiencing the work of a prodigious talent but also stepping into a dimension—one that challenges stereotypes, celebrates diversity, and reminds us all that greatness knows no barriers.

"Impossibility is a Myth" is more than an artwork; it is a call to believe, to dream, and to achieve.





CURATOR BIOGRAPHY

Princess Ifèdolapo Onikoyi is a curator, cultural project director, and founder of Artfrofest, based in Paris. Descended from the royal house of Onikoyi in Lagos, she draws on her heritage to inform her commitment to cultural diplomacy and the representation of African and diaspora voices on the global stage. She has curated more than 15 exhibitions across Paris, London, and Africa, with a focus on inclusion and representation. Her collaborations include UNESCO, Amazon France, cultural centres and galleries across France, the United Kingdom, and Africa. As curator of *Impossibility is a Myth*, she positions Kanyeyachukwu's achievement within an international context while highlighting its Nigerian roots. Her approach combines artistic vision with cultural diplomacy, situating Lagos as a key site on the global art map.

CURATORIAL STATEMENT

Standing on the Marina at Eko Atlantic, you hear the sea press against the platform, the air thick with salt and movement. Behind you rises a new city, ahead of you stretches a canvas of extraordinary scale. The Marina becomes a stage where land and water meet, where art steps into dialogue with place. This is where *Impossibility is a Myth* comes alive.

The installation shows a fragment of something vast. Kanyeyachukwu Tagbo-Okeke, at fifteen years old and living with autism, created a painting of 12,382 square metres, recognised by the Guinness World Records as the largest ever made by an individual. Here, 6000 square metres of that canvas are displayed. To stand before it is to feel scale in the body, and at the same time to sense the immensity beyond sight. A part gestures toward the whole, reminding us that impossibility is never truth but only perspective.

The vision does not end here. At Oando Building, a private exhibition brings together a series of paintings that echo the energy of his practice and the philosophy that drives it. These works, more intimate in scale yet no less insistent in message, extend the dialogue begun on the Marina. Together, the monumental installation and the private exhibition present two facets of the same conviction: that creativity refuses limitation, and that inclusion transforms both art and society.

Eko Atlantic makes this dialogue tangible. Built on land reclaimed from the sea, it is itself an act of transformation. The Marina, embraced by water, is not simply a site but a partner in the work. Lagos mirrors the canvas: resilient, ambitious, unafraid to claim the future from what once seemed impossible.

At the centre of all this stands the artist's own words: 'I define autism; it does not define me.' His painting embodies this truth. Autism here is not restriction but perspective. His work advocates for inclusion not as an afterthought but as foundation, showing how diversity expands what we imagine possible.

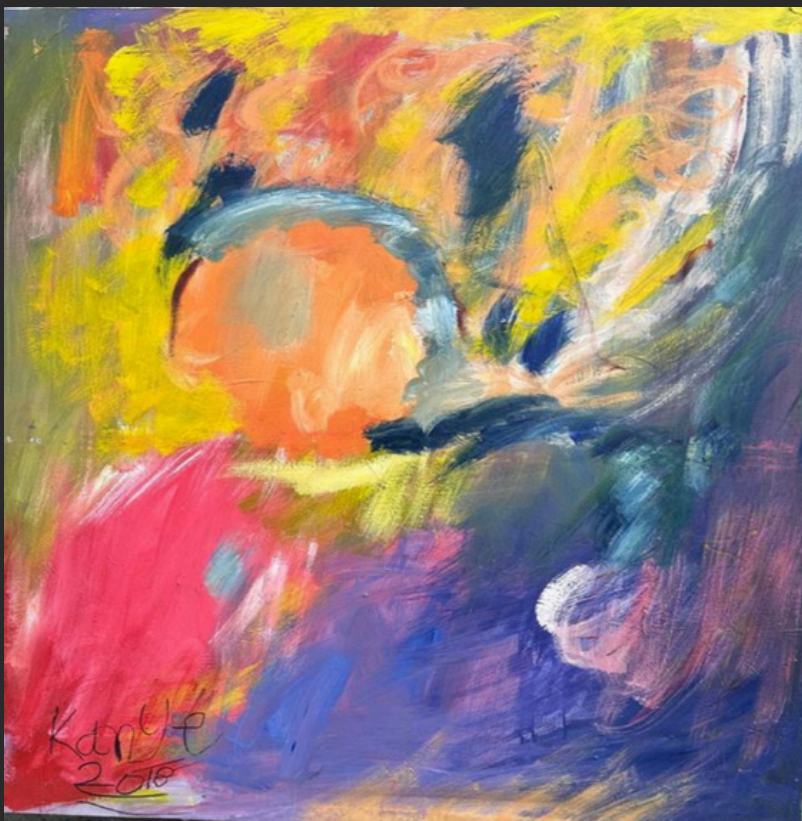
The timing strengthens the message. The exhibition coincides with the inaugural E1 Powerboat Race, drawing art into dialogue with sport and technology. Each discipline demands courage, focus, and vision. Together they remind us that boundaries are never permanent lines but thresholds to be crossed.

Impossibility is a Myth stands as a philosophy made visible rather than a single artwork. It is both installation and exhibition, both public declaration and personal reflection. It positions Lagos in dialogue with the world while remaining deeply rooted in Nigerianspirit.

To encounter this project, whether on the Marina or in the private exhibition, is to witness a philosophy made visible: impossibility is not destiny. It is perception. And perception can change.

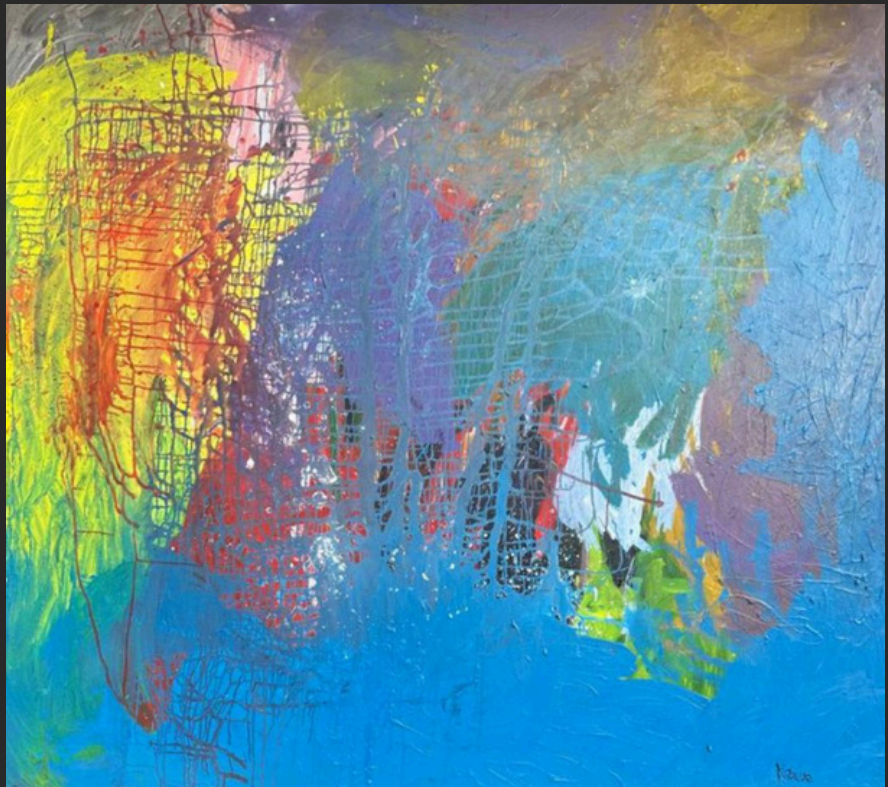


TITLE: THE PATH
MEDIUM: ACRYLIC ON
CANVAS
YEAR: 2021
SIZE: 36 INCHES BY 36
INCHES



TITLE: INFINITY
MEDIUM: ACRYLIC ON
CANVAS
YEAR: 2018
SIZE: 72INCHES BY
72INCHES

TITLE: BASKETMOUTH
MEDIUM: ACRYLIC ON
CANVAS
YEAR: 2021
SIZE: 84INCHES BY
84INCHES



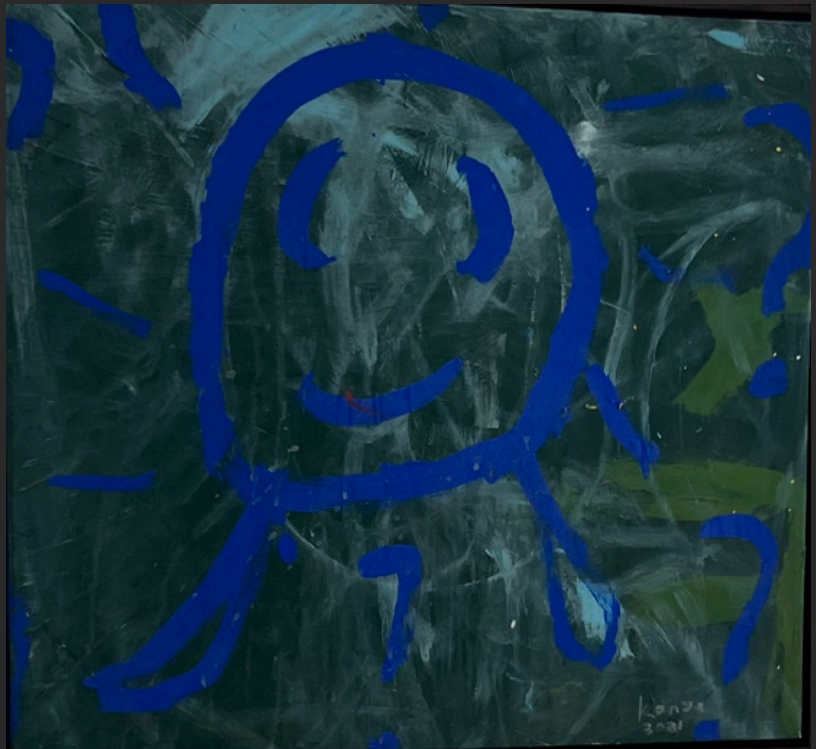
TITLE: HEART
MEDIUM: ACRYLIC ON
CANVAS
YEAR: 2020
SIZE: 84 INCHES BY 84
INCHES

TITLE: PANDEMIC
MEDIUM: ACRYLIC ON
CANVAS
YEAR: 2020
SIZE: 24INCHES BY
45INCHES



TITLE: COLOURFUL
MEDIUM: OIL ON
CANVAS
YEAR: 2021
SIZE: 36INCHES BY
46INCHES

TITLE: UNTITLED
MEDIUM: ACRYLIC ON
CANVAS
YEAR: 2024
SIZE : 36 INCHES BY 36
INCHES



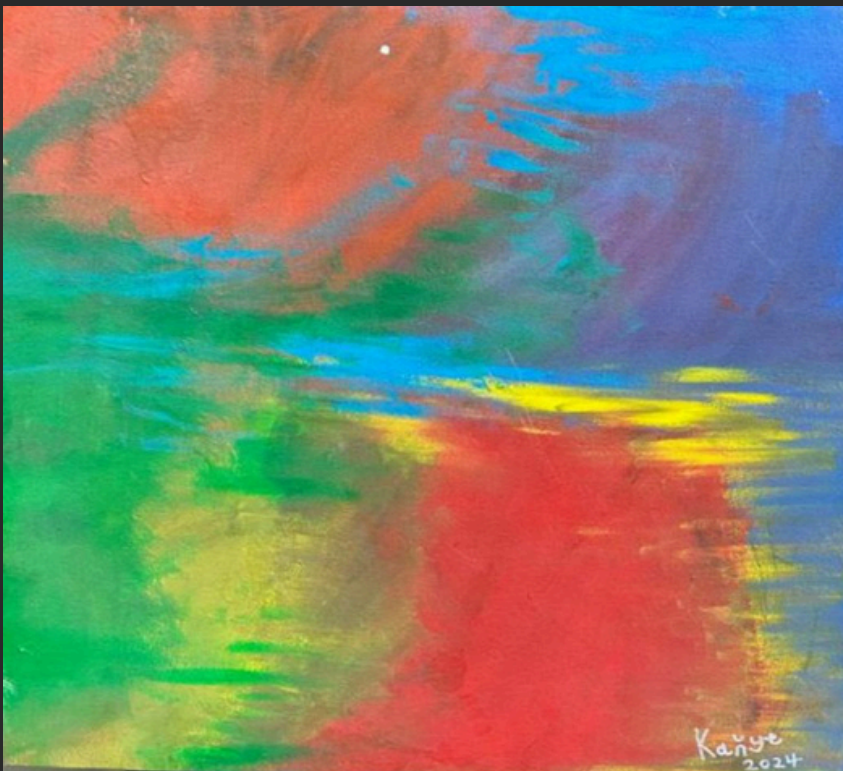
TITLE: 2 BALOONS
MEDIUM: ACRYLIC ON
CANVAS
YEAR: 2020
SIZE: 24INCHES BY
45INCHES

TITLE: UNTITLED
MEDIUM: ACRYLIC ON
CANVAS
YEAR: 2024
SIZE: 36 INCHES BY 36
INCHES



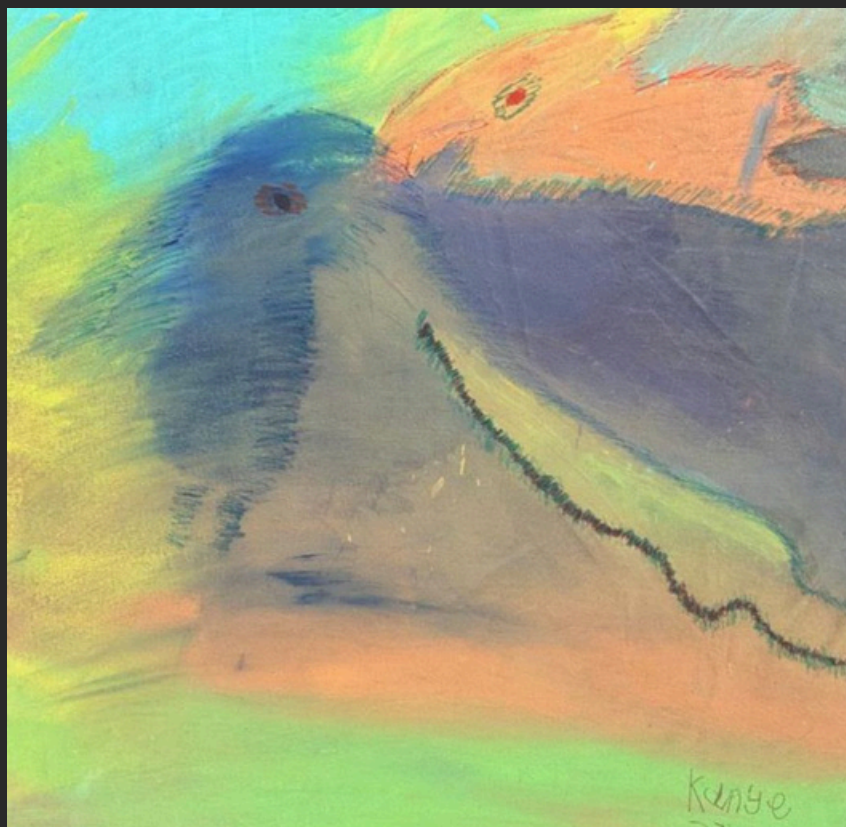
TITLE: ANCHOR
MEDIUM: ACRYLIC ON
CANVAS
YEAR: 2024
SIZE: 36INCHES BY
36INCHES

TITLE: EMPIRE
MEDIUM: ACRYLIC ON
CANVAS
YEAR: 2021
SIZE: 36INCHES BY
46INCHES



TITLE: BEAUTIFUL DAY
MEDIUM: ACRYLIC ON
CANVAS
YEAR: 2024
SIZE: 30 INCHES BY 36
INCHES

TITLE: UNTITLED
MEDIUM: ACRYLIC ON
CANVAS
YEAR: 2024
SIZE: 36INCHES BY
36INCHES



TITLE: UNTITLED
MEDIUM: ACRYLIC ON
CANVAS
YEAR: 2024
SIZE: 36 INCHES BY 36
INCHES

Closing Remarks

"Impossibility is a Myth" is more than an exhibition; it is a testimony to the boundless potential within every individual. Through the eyes and hands of a remarkable 15-year-old autistic artist, we are reminded that creativity has no limits, and that what may seem impossible can become a powerful reality. This exhibition invites us to see beyond labels, to embrace difference as brilliance, and to celebrate the beauty of resilience and imagination. May each work inspire you to believe that impossibility is, indeed, a myth.

SPONSORED BY



curated by
Princess Ifèdolapo Onikoyi